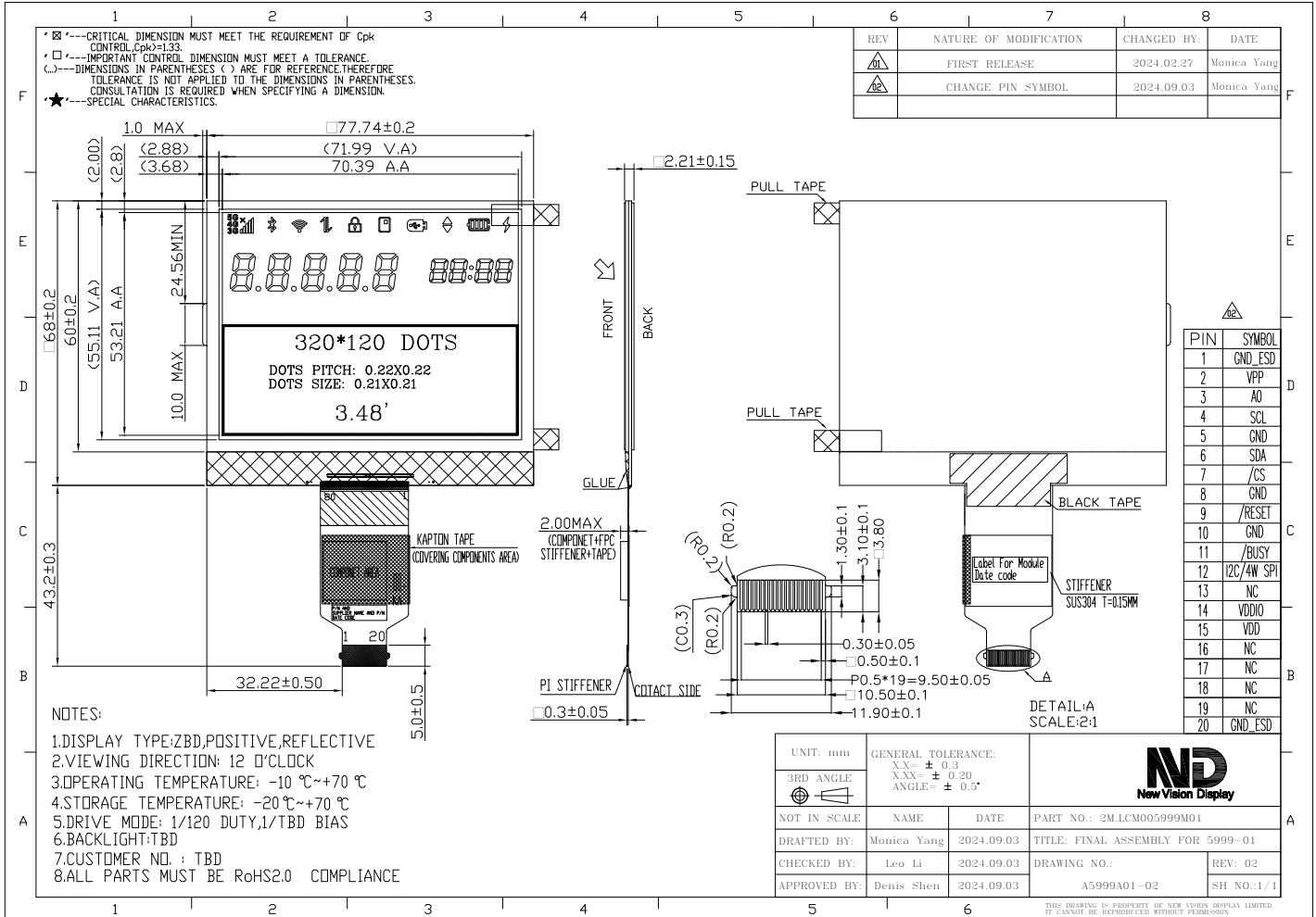


ZBD PRODUCT SPECIFICATIONS

320 × 120

3.48"

Part Number	1M.NVDS-5999ZPNNBNCH-01
Overall Dimensions	77.74mm(W) x 68.00mm(H) x 2.21mm(T)
Active Area	70.39mm(W) x 53.21mm(H)
Resolution	320 columns * 120 Rows Dots
Dot Size	0.210mm x 0.210mm
Display Mode	ZBD Reflective
Contrast Ratio	9:1 (typ)
Viewing Angles (CR≥5)	45°/30°/60°/60°(Left/Right/Top/Bottom)
View Direction	12 o'clock
Driver IC	NB7142 embedded
Vdd (Power Supply)	2.7~3.6V
IOVCC (I/O logic Voltage)	1.8~3.6V
Interface	4-wire SPI or I2C



The information contained herein is based upon typical data, Multek Display makes no warranties expressed or implied as to its accuracy and assumes no liability arising out of its use by others. The user should determine suitability of Multek displays for each individual application.