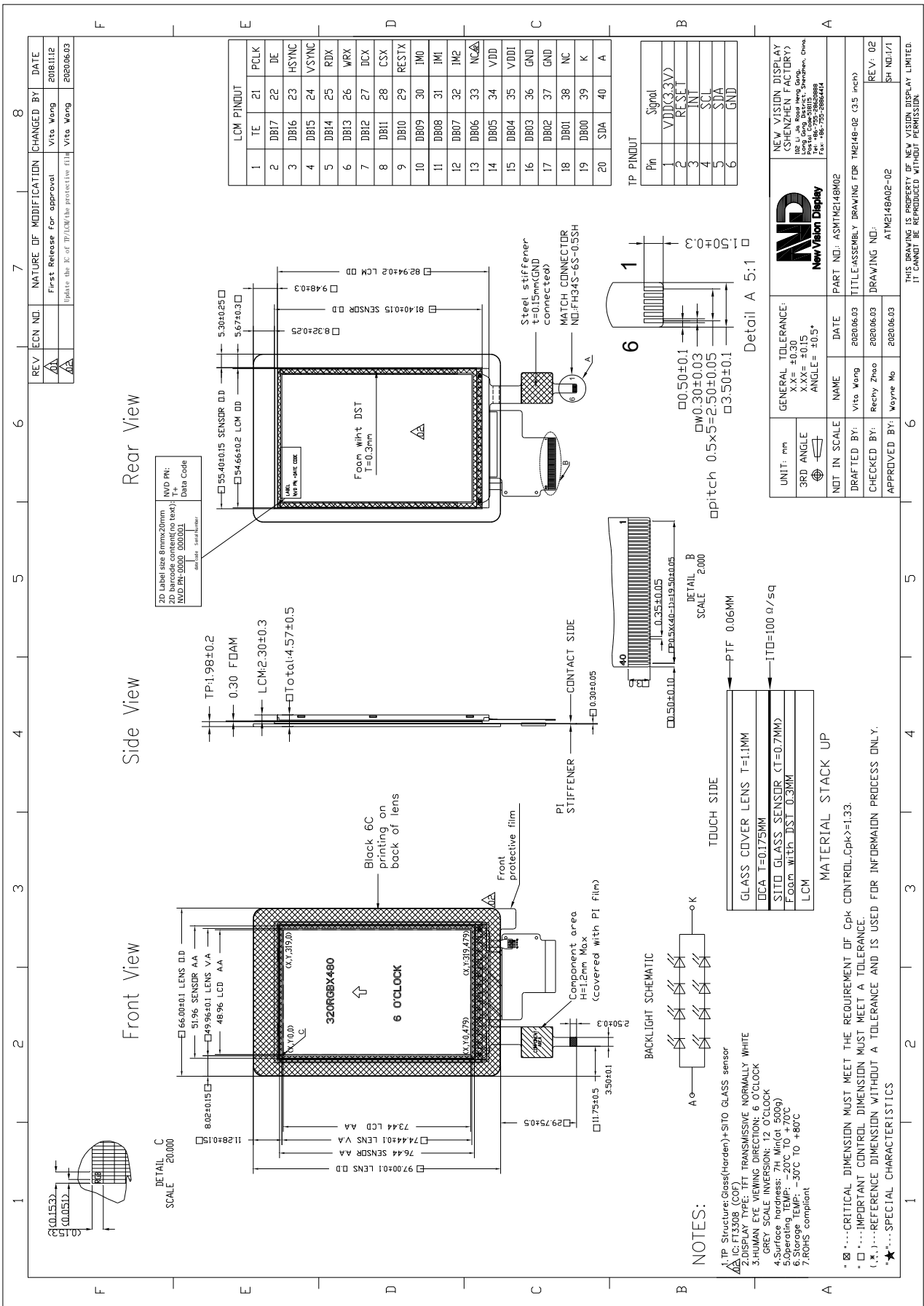


Part Number	TM2148SA035C-02
Overall Dimensions	66.00 (H) x 97.00(V) x4.57(T)mm
Active Area	48.96 (H) x 73.44 (V) mm
Resolution	320RGB (H) x480 (V)
Pixel Size	0.153(H) x 0.153(V)mm
Display Colors	262K
Display Mode	Transmissive/Normally White
LCD Type	a-Si TFT
Contrast Ratio	400:1(Min)
View Direction	6 o'clock
Grayscale inversion Direction	12 o'clock
Viewing Angles (CR≥10)	Typ 65°/65°/65°/60° (Left/Right/Top/Bottom) Min 60°/60°/60°/55°(Left/Right/Top/Bottom)
Brightness (I <sub>f</sub> =20mA)	240 cd/m <sup>2</sup> (Min)
NTSC	50%(Min)
Driver IC	ST7796U (or Equivalent)
VDD ( Power Supply)	2.8~3.2V
Interface	SPI / RGB / MCU parallel interface
Backlight System	4 *2 White LEDs
Forward Voltage	12.8V (typ)
Forward Current	30 mA (typ)
<b>Touch Panel Parameter</b>	
Input Method	Bare finger
Number of simultaneous touches	1
Touch controller IC	FT3308(COF)
Min. spacing between two touches	18mm
Positional Accuracy	± 2.5mm at center and edges
Response Time / Speed	≦ 17.5ms
Minimum Touch Area	30mm <sup>2</sup>
Minimum Touch Pressure	0N
Optical Transmittance	>85%
I2C Address	0x38
ESD Capability	150pF,330ohm, ±10KV, air test 150pF,330ohm, ±8KV, contact test
Interface to Host	I2C
Operating Voltage	3.3V

The information contained herein is based upon typical data, New Vision Display makes no warranties expressed or implied as to its accuracy and assumes no liability arising out of its use by others. The user should determine suitability of New Vision Displays for each individual application.



The information contained herein is based upon typical data, New Vision Display makes no warranties expressed or implied as to its accuracy and assumes no liability arising out of its use by others. The user should determine suitability of New Vision Displays for each individual application.