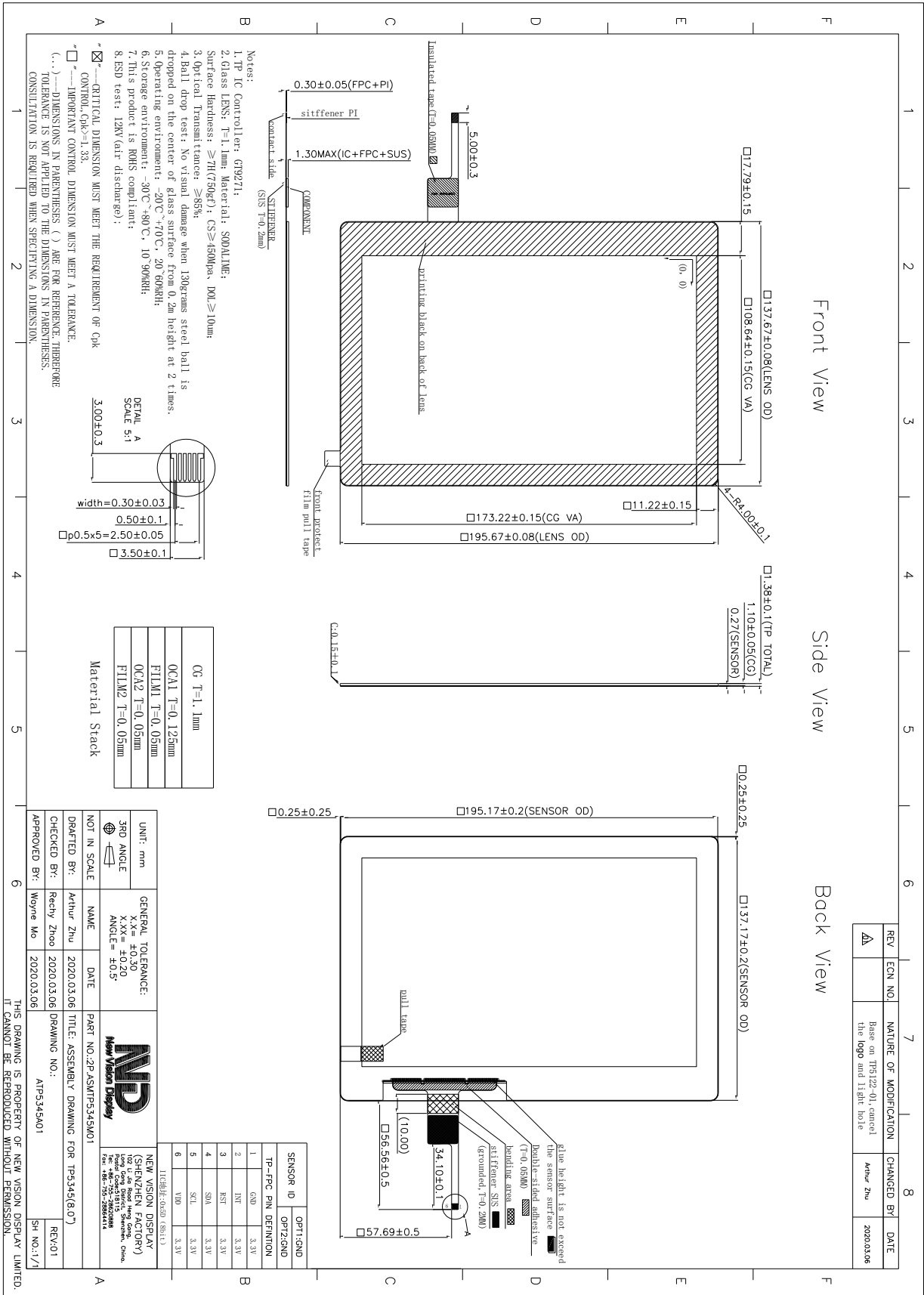


TOCH PANEL SPECIFICATIONS	Projected Capacitive	FILM Substrate	8.0” Diagonal
Part Number	TP5345TA080C-01		
Outline Dimensions of TP sensor	137.17 (W) x 195.17 (H)mm		
Overall Dimensions incl. cover lens	137.67 (W) x 195.67 (H) x 1.38 (T)mm		
Active Area	109.64 (W) x 174.16 (H)mm		
Input Method	Bare finger		
Number of simultaneous touches	5		
Min. spacing between two touches	18mm		
Positional Accuracy	±2.5mm at 4 edge and ±1.5mm at center		
Resolution	800 (H) x 1280(V)		
Response Time / Speed	<20ms		
Minimum Touch Area	30mm ²		
Minimum Touch Pressure	0N		
Optical Transmittance	>85%		
Operating temperature	-20°C to +70°C		
Storage temperature	-30°C to +80°C		
Life of touches	>10 million over lifetime		
Surface Hardness	7H		
Anti-glare surface	No		
FPC attachment method	ACF bonding		
FPC bending radius	1mm		
Touch controller IC	GT9271		
Interface to Host	I2C		
I2C Address	0x5D		
Operating Voltage	3.3V		

The information contained herein is based upon typical data, New Vision Display makes no warranties expressed or implied as to its accuracy and assumes no liability arising out of its use by others. The user should determine suitability of New Vision Displays for each individual application.



REV	ECN NO.	NATURE OF MODIFICATION	CHANGED BY	DATE
1		Based on TP5122-01, cancel the logo and light hole	Arthur Zhu	2020.03.06



The information contained herein is based upon typical data, New Vision Display makes no warranties expressed or implied as to its accuracy and assumes no liability arising out of its use by others. The user should determine suitability of New Vision Displays for each individual application.