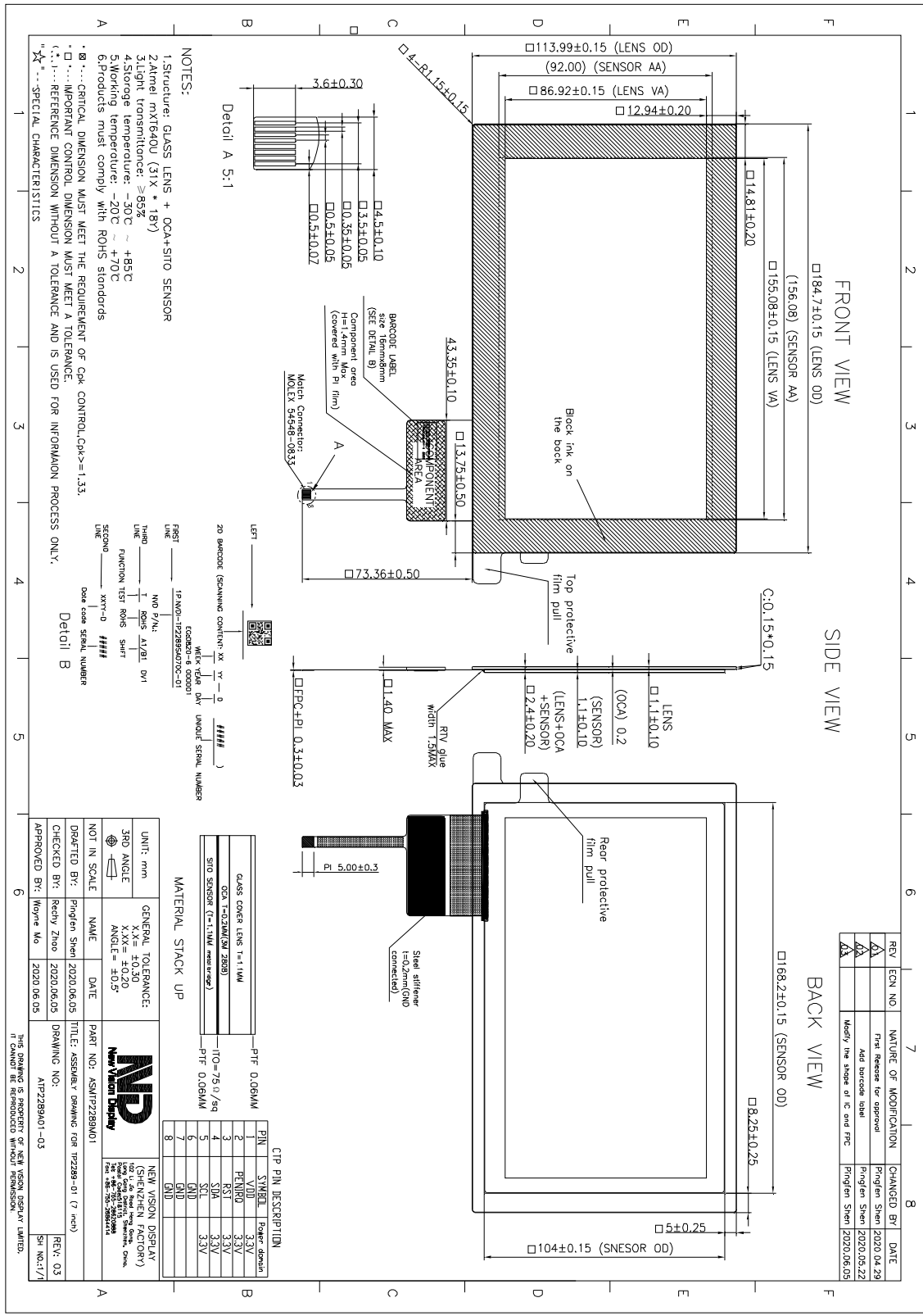


<b>TOCH PANEL SPECIFICATIONS</b>	<b>Projected Capacitive</b>	<b>Glass Substrate</b>	<b>7.0" Diagonal</b>
----------------------------------	---------------------------------	----------------------------	--------------------------

Part Number	TP2289SA070C-01
Outline Dimensions of TP sensor	168.2(W) x 104.00 (H)mm
Overall Dimensions incl. cover lens	184.70(W) x 113.99(H) x 2.4 (T)mm
Active Area	156.08(W) x 92.00 (H)mm
Input Method	Bare or gloved finger or thick conductive stylus
Number of simultaneous touches	10
Min. spacing between two touches	18mm
Positional Accuracy	±2.0mm at 4 edge and ±1.0mm at center
Resolution	800 (H) x 480(V)
Response Time / Speed	<15ms
Minimum Touch Area	30mm <sup>2</sup>
Minimum Touch Pressure	0N
Optical Transmittance	>85%
Operating temperature	-20°C to +70°C
Storage temperature	-30°C to +80°C
Life of touches	>10 million over lifetime
Surface Hardness	7H
Anti-glare surface	No
FPC attachment method	ACF bonding
FPC bending radius	1mm
Touch controller IC	MXT640U
Interface to Host	I2C
I2C Address	0x4A
Operating Voltage	3.3V

The information contained herein is based upon typical data, New Vision Display makes no warranties expressed or implied as to its accuracy and assumes no liability arising out of its use by others. The user should determine suitability of New Vision Displays for each individual application.



The information contained herein is based upon typical data, New Vision Display makes no warranties expressed or implied as to its accuracy and assumes no liability arising out of its use by others. The user should determine suitability of New Vision Displays for each individual application.