

TFT PRODUCT SPECIFICATIONS	800RGB x 480	16.7M Colors	5.0" Diagonal
-----------------------------------	---------------------	---------------------	----------------------

Part Number	TM2131DA050C-02
Overall Dimensions	134.40(H)x90.18(V)x5.15(T)
Active Area	108.00 (H) x 64.80 (V) mm
Resolution	800 RGB (H) x 480 (V) Stripe
Pixel Size	0.135 x 0.135mm
Display Colors	16.7M
Display Mode	TN, Normally White, Transmissive
LCD Type	a-Si TFT
Contrast Ratio	450:1 (Typ)
Viewing Angles (CR≥10)	75°/75°/60°/70° (Left/Right/Top/Bottom)
View Direction	12 o'clock
Grayscale Reversion	6 o'clock
Brightness (I=40mA)	350cd/m ² (Min)
NTSC	40%
Driver IC	OTA7000A (Source)and SPFD6048A(Gate)
VDD	3.0~3.6V
Interface	RGB 24 Bits
Backlight System	14 White LEDs,7 in series ,2in parallel
Forward Voltage	22.4V(typ)
Forward Current	40mA (typ)

Touch Panel Parameter

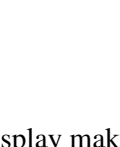
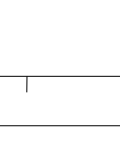
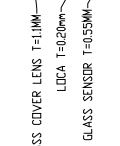
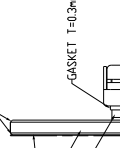
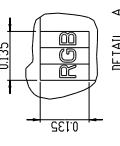
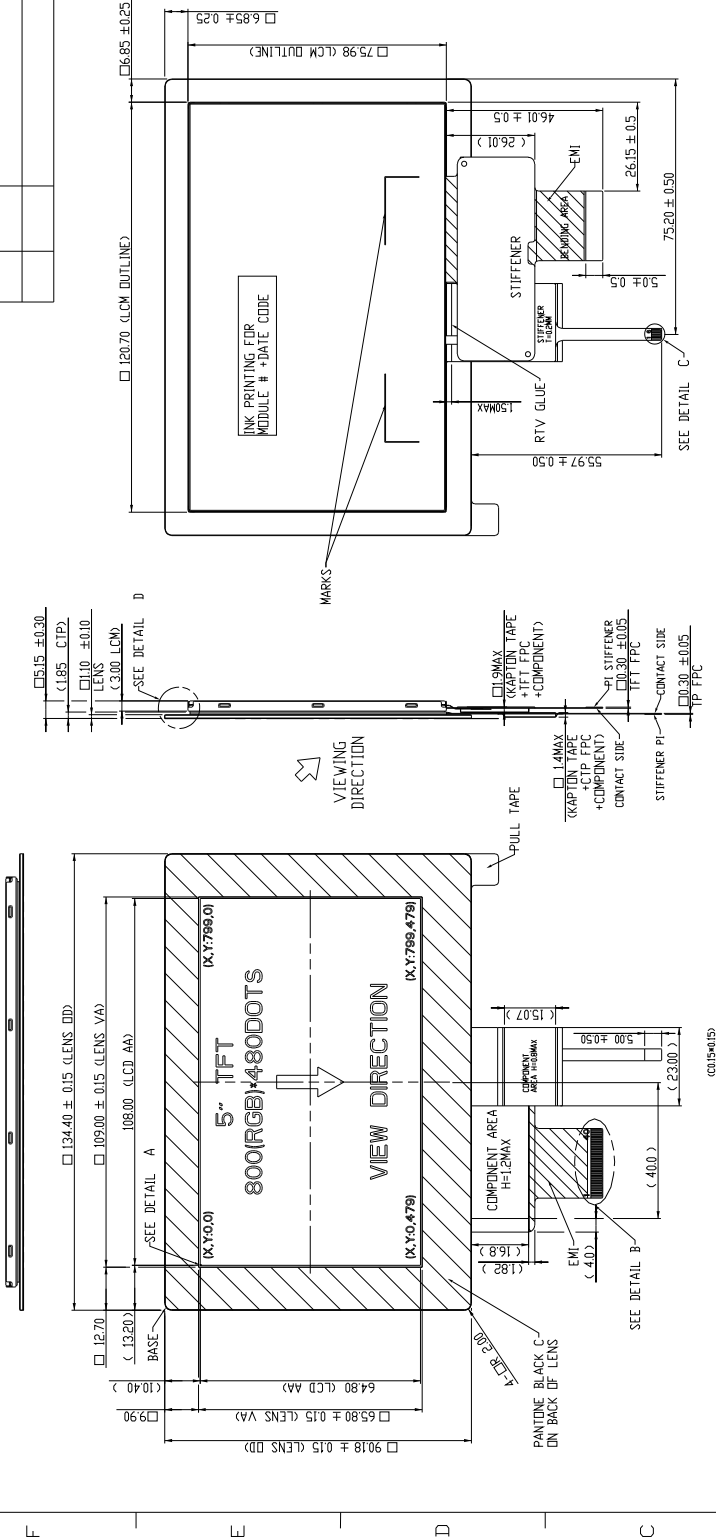
Input Method	Bare or gloved finger or thick conductive stylus
Number of simultaneous touches	5 point
Touch controller IC	MXT336U
Positional Accuracy	± 2.5mm at 4 edges and 1.5mm at center
Life of touches	>10 million over lifetime
Connection Type	ZIF Connector
Minimum Touch Pressure	0 N
Optical Transmittance	>86%
I2C Address	0X4A
ESD Capability	15KV (Air discharge TP with lens)
Interface to Host	I2C
Operating Voltage	VDD=3.3V

The information contained herein is based upon typical data, New Vision Display makes no warranties expressed or implied as to its accuracy and assumes no liability arising out of its use by others. The user should determine suitability of New Vision Displays for each individual application.



LCM MODULE FPC UNBENDING STATUS FOR SHIPPING OUT

REV	ECN NO.	NATURE OF MODIFICATION	CHANGE BY	DATE
▲		FIRST RELEASE	Jasmine Zhang	2019.07.01



PIN NO	DESCRIBE
1	VDD(CV3)
2	SDA(CV3)
3	/CHG(CV3)
4	/RESET(CV3)
5	SCL(CV3)
6	GND

TP PIN	DESCRIBE
1	VDD(CV3)
2	SDA(CV3)
3	/CHG(CV3)
4	/RESET(CV3)
5	SCL(CV3)
6	GND

UNIT: mm	GENERAL TOLERANCE: XXX ± 0.3
3RD ANGLE	XXX ± 0.20
ANGLE	ANGLE = ± 0.5°

NOT IN SCALE	NAME	DATE
DAUGHT BY: Steven Luo	Jasmine Zhang	2019.07.01
CHECKED BY: Steven Luo	Jasmine Zhang	2019.07.01
APPROVED BY: Leson Li	Jasmine Zhang	2019.07.01

NEW VISION DISPLAY (SHENZHEN FACTORY)	PART NO.: 2P-ASMTM2131M02
NEW VISION DISPLAY (SHENZHEN FACTORY)	TITLE: FINAL ASSEMBLY FOR TM2131-02
NEW VISION DISPLAY (SHENZHEN FACTORY)	DRAWING NO.: ATM2131A02-01
NEW VISION DISPLAY (SHENZHEN FACTORY)	REV: 01
NEW VISION DISPLAY (SHENZHEN FACTORY)	SH NO.: 1/1

NEW VISION DISPLAY (SHENZHEN FACTORY)	REV: 01
NEW VISION DISPLAY (SHENZHEN FACTORY)	SH NO.: 1/1

NEW VISION DISPLAY (SHENZHEN FACTORY)	REV: 01
NEW VISION DISPLAY (SHENZHEN FACTORY)	SH NO.: 1/1

NEW VISION DISPLAY (SHENZHEN FACTORY)	REV: 01
NEW VISION DISPLAY (SHENZHEN FACTORY)	SH NO.: 1/1

NEW VISION DISPLAY (SHENZHEN FACTORY)	REV: 01
NEW VISION DISPLAY (SHENZHEN FACTORY)	SH NO.: 1/1

NEW VISION DISPLAY (SHENZHEN FACTORY)	REV: 01
NEW VISION DISPLAY (SHENZHEN FACTORY)	SH NO.: 1/1

NEW VISION DISPLAY (SHENZHEN FACTORY)	REV: 01
NEW VISION DISPLAY (SHENZHEN FACTORY)	SH NO.: 1/1

NEW VISION DISPLAY (SHENZHEN FACTORY)	REV: 01
NEW VISION DISPLAY (SHENZHEN FACTORY)	SH NO.: 1/1

NEW VISION DISPLAY (SHENZHEN FACTORY)	REV: 01
NEW VISION DISPLAY (SHENZHEN FACTORY)	SH NO.: 1/1

NEW VISION DISPLAY (SHENZHEN FACTORY)	REV: 01
NEW VISION DISPLAY (SHENZHEN FACTORY)	SH NO.: 1/1

THIS DRAWING IS PROPERTY OF NEW VISION DISPLAY LIMITED. IT CANNOT BE REPRODUCED WITHOUT PERMISSION.

The information contained herein is based upon typical data, New Vision Display makes no warranties expressed or implied as to its accuracy and assumes no liability arising out of its use by others. The user should determine suitability of New Vision Displays for each individual application.