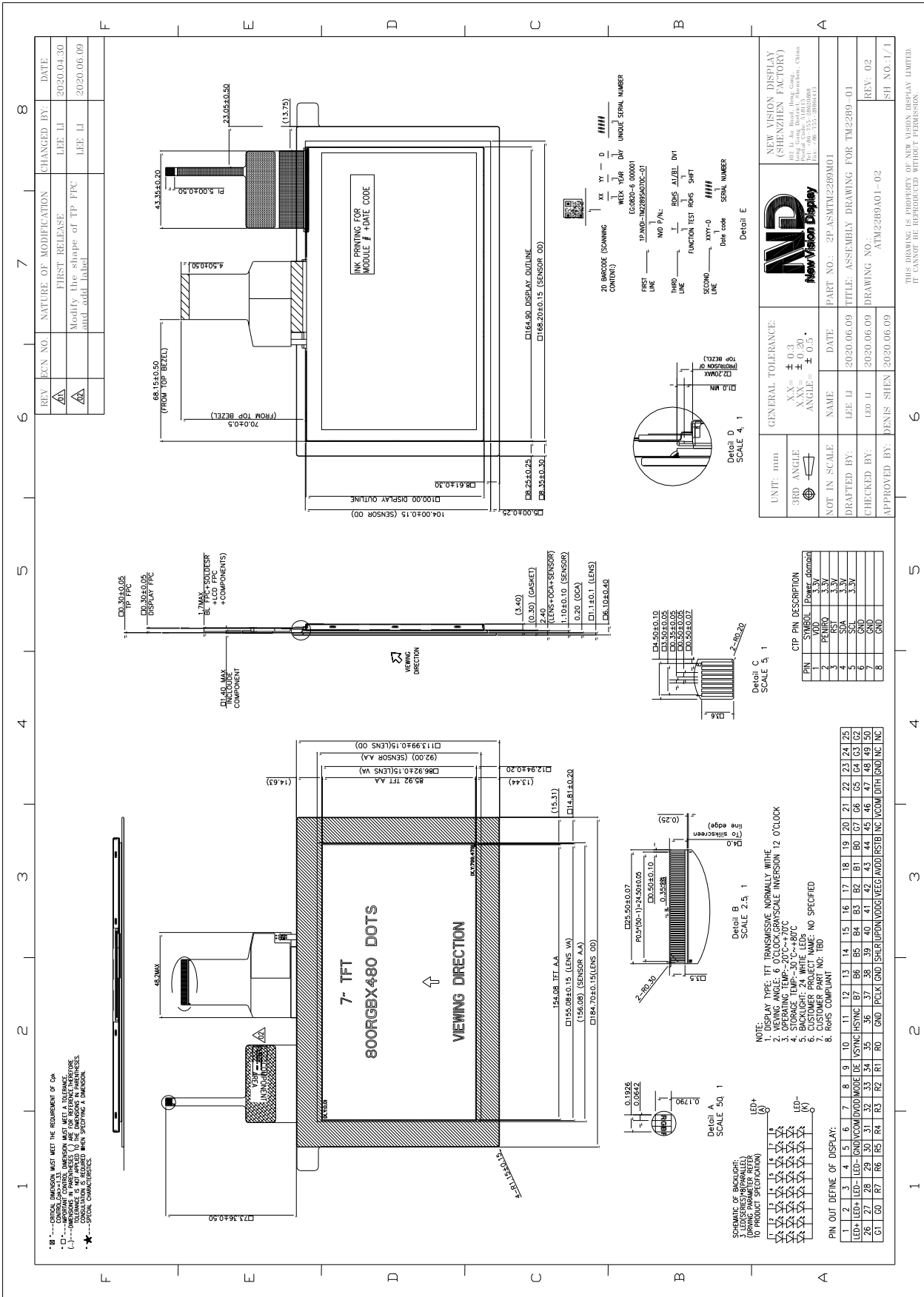


Part Number	1P.NVDI-TM2289SA070C-01
Overall Dimensions	184.70(H)x 113.99(V)x6.1(T)
Active Area	154.08(H) x 85.92(V)
Resolution	800RGB(H) x 480(V) Stripe
Pixel Size	0.1926(H) x 0.1790(V) mm
Display Colors	16.7M
Display Mode	TN, Normally White, Transmissive
LCD Type	a-Si TFT
Contrast Ratio	800:1 (typ)
View Direction	6 o'clock
Grayscale inversion Direction	12 o'clock
Viewing Angles (CR≥10)	70°/70°/60°/70°(Left/Right/Top/Bottom)
Brightness (If=160mA)	380cd/m <sup>2</sup> (typ)
NTSC	TBD
Driver IC	HX8264-E(Source)+HX8664-B(Gate) or equivalent
VDD( Power Supply)	2.5V~3.3V
Interface	24-bit RGB
Backlight System	24 White LED ,3 in series ,8 in Parallel
Forward Voltage	9.3V(typ)
Forward Current	160mA(typ)
<b>Touch Panel Parameter</b>	
Input Method	Bare or gloved finger or thick conductive stylus
Number of simultaneous touches	10
Touch controller IC	MXT640U
Min. spacing between two touches	18mm
Positional Accuracy	± 2.0mm at edge and ±1.0mm at center
Response Time / Speed	<18ms
Minimum Touch Area	25mm <sup>2</sup>
Minimum Touch Pressure	0 N
Optical Transmittance	>85%
I2C Address	0X4A
ESD Capability	15KV (Air discharge TP with lens)
Interface to Host	I2C
Operating Voltage	VDD=3.3V

The information contained herein is based upon typical data, New Vision Display makes no warranties expressed or implied as to its accuracy and assumes no liability arising out of its use by others. The user should determine suitability of New Vision Displays for each individual application.



The information contained herein is based upon typical data, New Vision Display makes no warranties expressed or implied as to its accuracy and assumes no liability arising out of its use by others. The user should determine suitability of New Vision Displays for each individual application.