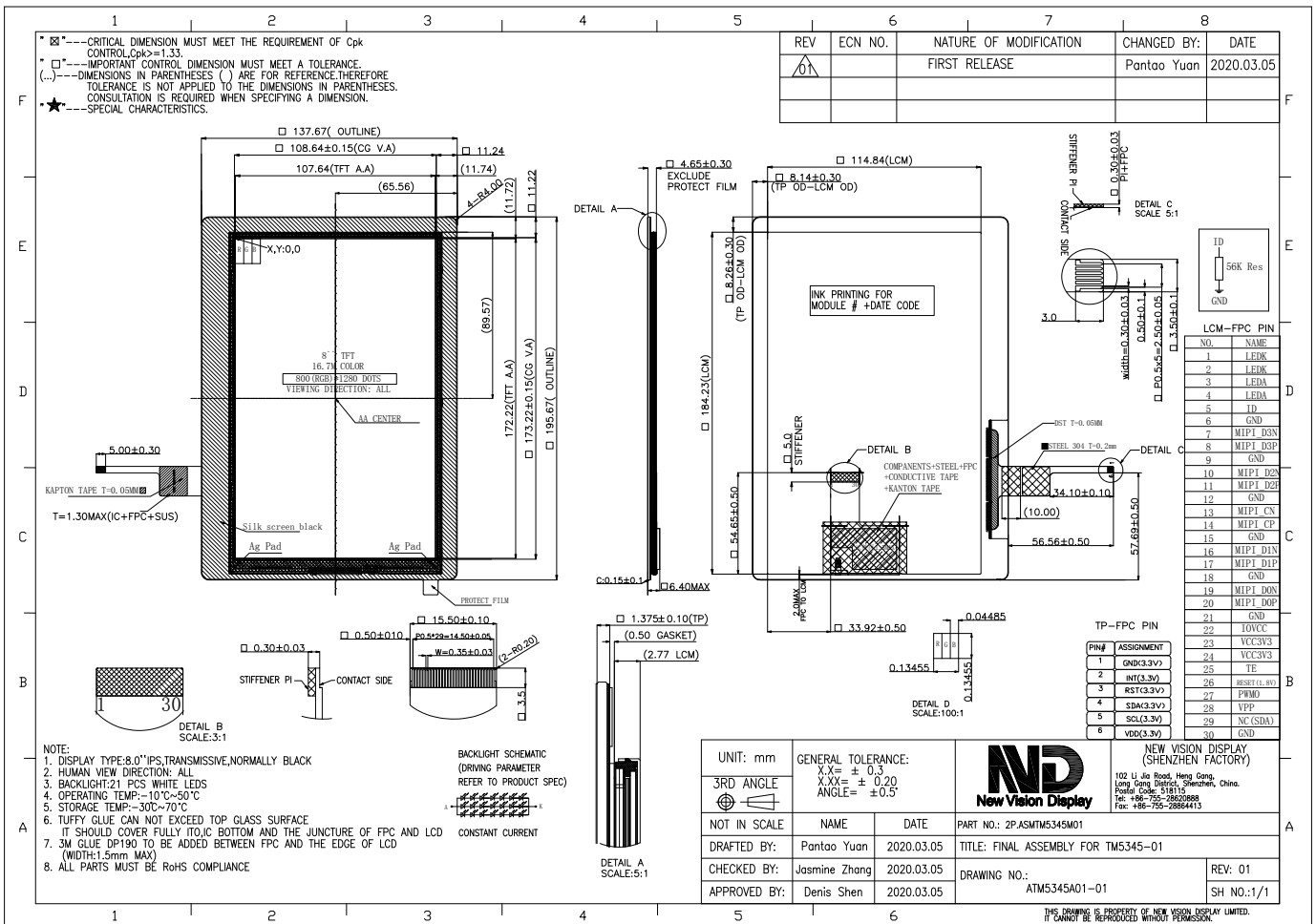


Part Number	1P.NVDS-TM5345TA080C-01
Overall Dimensions	137.67(H)x195.67(V)x4.65(T)
Active Area	107.64 (H) x 172.22 (V) mm
Resolution	800 RGB (H) x 1280 (V) Stripe
TFT Pixel Size	0.13455 x 0.13455mm
Display Colors	16.7M
Display Mode	IPS, Transmissive, Normally Black
LCD Type	a-Si TFT
Contrast Ratio	1000(typ)
Viewing Angles (CR≥10)	80°/80°/80°/80° (Left/Right/Top/Bottom)
View Direction	ALL
Brightness (I=60mA)	290 cd/m ²
NTSC	60%
TFT Driver IC	JD9365DA
Touch Controller	GT9271
TFT Interface	MIPI 4-Data Lane
Touch Interface to Host	I2C
Touch I2C Address	0xBA/0xBB (8Bit, Write/Read)
Backlight System	21 White LEDs
Forward Voltage(BL)	22.4V(typ)
Forward Current(BL)	60mA (typ)



The information contained herein is based upon typical data, New Vision Display makes no warranties expressed or implied as to its accuracy and assumes no liability arising out of its use by others. The user should determine suitability of New Vision Displays for each individual application.