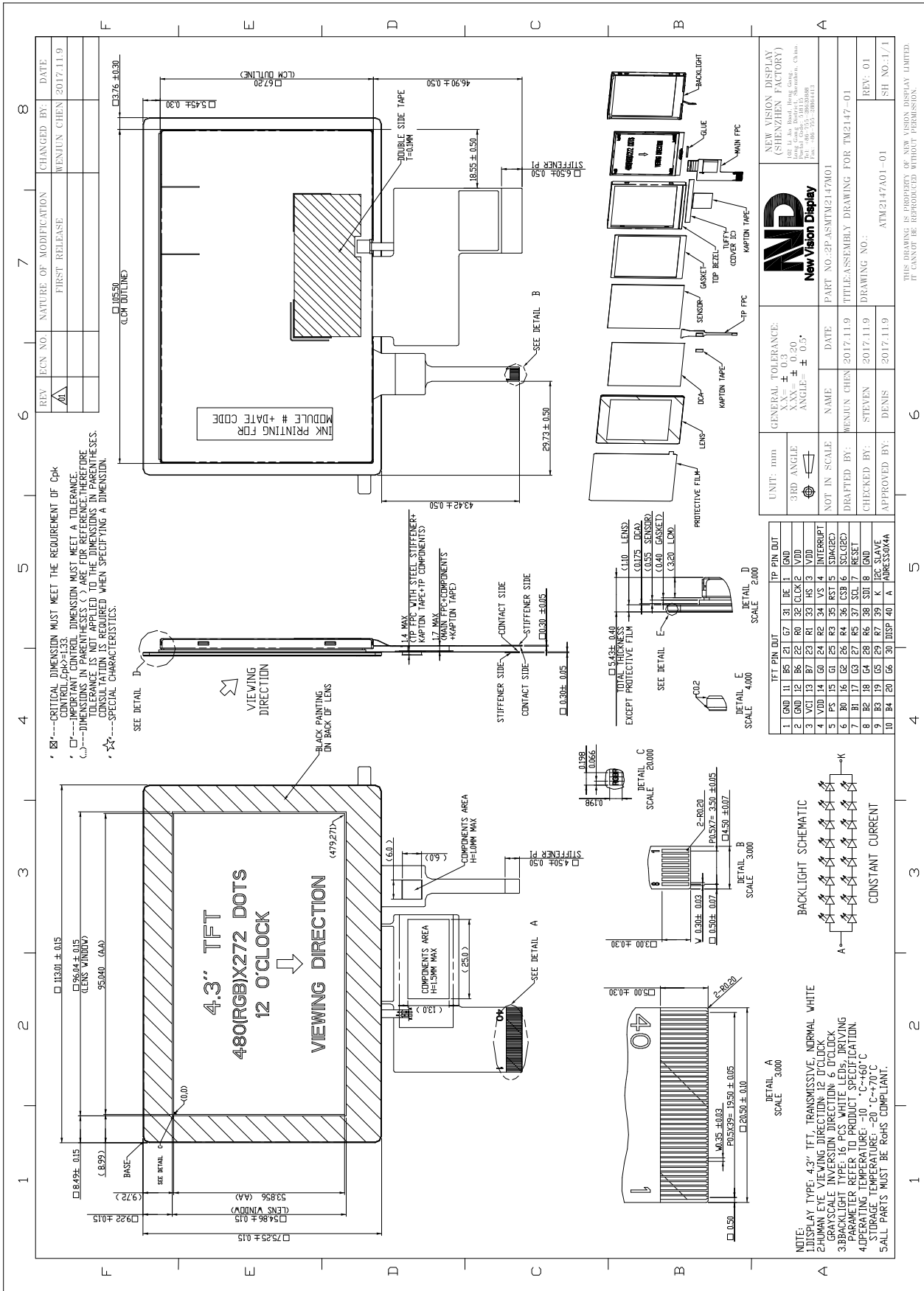


<b>TFT PRODUCT SPECIFICATIONS</b>	<b>480RGB x 272</b>	<b>16.7M Colors</b>	<b>4.3" Diagonal</b>
-----------------------------------	---------------------	---------------------	----------------------

Part Number	TM2147SA043C-01
Overall Dimensions	113.01(H)x75.25(V)x5.43(T)
Active Area	95.04 (H) x 53.856 (V) mm
Resolution	480 RGB (H) x 272 (V) Stripe
Pixel Size	0.198 x 0.198mm
Display Colors	16.7M
Display Mode	TN, Normally White, Transmissive
LCD Type	a-Si TFT
Contrast Ratio	350:1 (Typ)
Viewing Angles (CR≥10)	80°/80°/80°/70° (Left/Right/Top/Bottom)
View Direction	12 o'clock
Grayscale Reversion	6 o'clock
Brightness (I=40mA)	380cd/m <sup>2</sup> (Min)
NTSC	40%
Driver IC	HX8257-A01 or equivalent
VDD	3.0~3.96V
Interface	RGB 24 Bits
Backlight System	8 White LEDs in series and 2 branches in parallel
Forward Voltage	25.6V(typ)
Forward Current	30mA (typ)
<b>Touch Panel Parameter</b>	
Input Method	Bare or gloved finger or thick conductive stylus
Number of simultaneous touches	5 point
Touch controller IC	Atmel mxT336U(COF)
Positional Accuracy	± 1.5mm at 4 edges and 1mm at center
Life of touches	>10 million over lifetime
Connection Type	ZIF Connector
Minimum Touch Pressure	0 N
Optical Transmittance	>=86%
I2C Address	0x4A
Interface to Host	I2C
Operating Voltage	VDD=3.3V

The information contained herein is based upon typical data, New Vision Display makes no warranties expressed or implied as to its accuracy and assumes no liability arising out of its use by others. The user should determine suitability



The information contained herein is based upon typical data, New Vision Display makes no warranties expressed or implied as to its accuracy and assumes no liability arising out of its use by others. The user should determine suitability