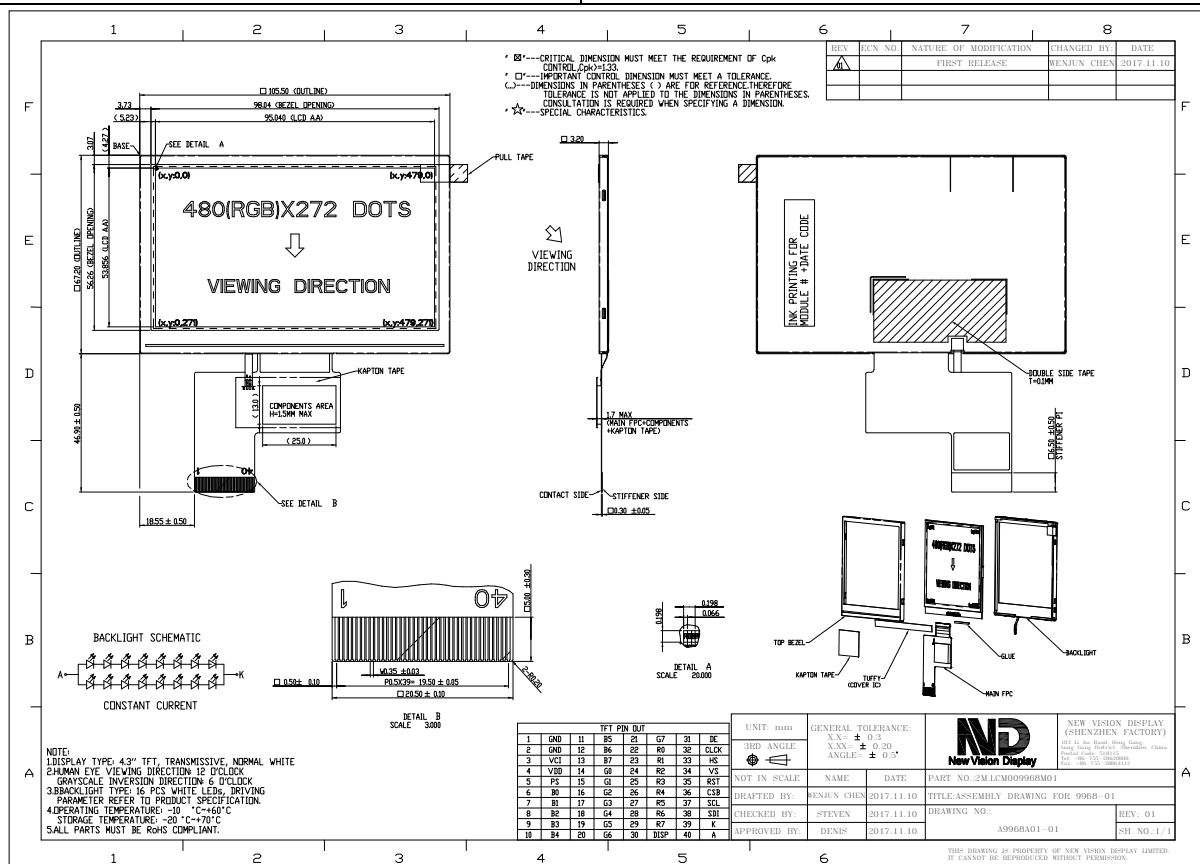


<b>TFT PRODUCT SPECIFICATIONS</b>	<b>480RGB x 272</b>	<b>16.7M Colors</b>	<b>4.3" Diagonal</b>
-----------------------------------	---------------------	---------------------	----------------------

Part Number	1M.NVDS-9968DPTL043H-01
Overall Dimensions	105.50 (H) x 67.2 (V) x 3.20(T)mm
Active Area	95.04 (H) x 53.856 (V) mm
Resolution	480 RGB (H) x 272 (V) Stripe
Pixel Size	0.198 x 0.198mm
Display Colors	16.7M
Display Mode	TN, Normally White, Transmissive
LCD Type	a-Si TFT
Contrast Ratio	350:1 (Typ)
Viewing Angles (CR≥10)	70°/70°/65°/70° (Left/Right/Top/Bottom)
View Direction	12 o'clock
Grayscale Reversion	6 o'clock
Brightness (I <sub>f</sub> =18mA)	450cd/m <sup>2</sup> (Min)
NTSC	40%(Min)
Driver IC	HX8257-A01
VDD(Digital circuit)	3.0~3.6V
VCI (pump circuit)	3.0~3.6V
Interface	RGB 24 Bits
Backlight System	8 White LEDs in series and 2 branches in parallel
Forward Voltage	25.6V(typ)
Forward Current	30mA (typ)



The information contained herein is based upon typical data, New Vision Display makes no warranties expressed or implied as to its accuracy and assumes no liability arising out of its use by others. The user should determine suitability of New Vision Displays for each individual application.