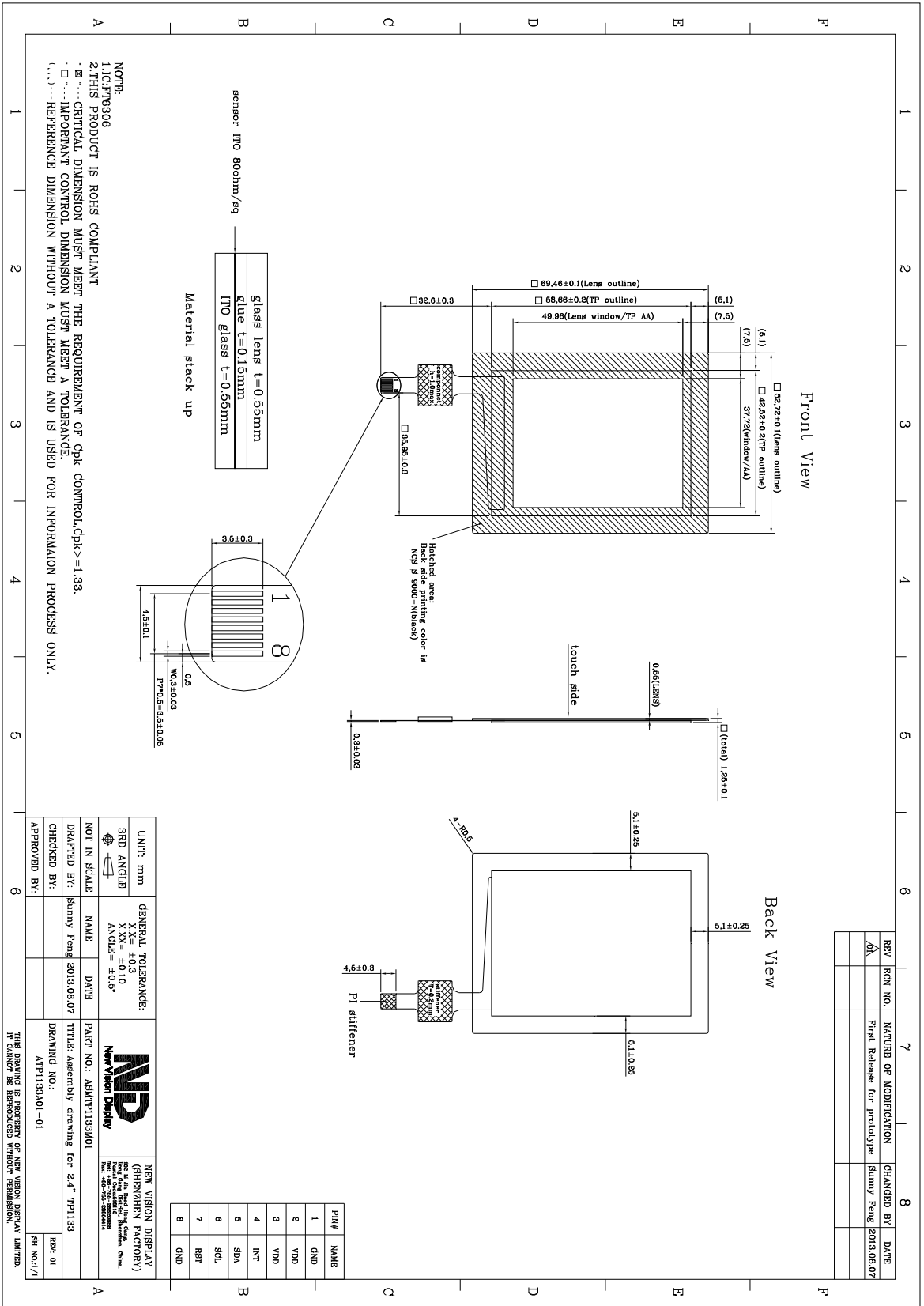


TOUCH PANEL SPECIFICATIONS	Projected Capacitive	Glass Substrate	2.4" Diagonal
-----------------------------------	-----------------------------	------------------------	----------------------

Part Number	NVDS-TP1133DA024S-01
Outline Dimensions of TP sensor	42.52(W) x 58.66 (H) x 0.55 (T) mm
Overall Dimensions incl. cover lens	48.67(W) x 63.12 (H) x 1.25 (T) mm (Can be changed)
Active Area	37.72 (W) x 49.96(H) mm
Input Method	Finger or Gloved Finger
Number of simultaneous touches	one and gesture
Min. spacing between two touches	15mm
Positional Accuracy	± 2mm at 4 edges and ±1.5mm at center
Touch System Resolution	<0.2mm
Response Time / Speed	<10msec
Minimum Touch Area	30mm ²
Minimum Touch Pressure	0 N
Optical Transmittance	>87%
ITO resistivity	80 Ω/□
Index matching	No (available on request)
Anti-glare surface	No (available on request)
Operating temperature	-20°C to +70°C, up to 90% RH non-condensing
Storage temperature	-30°C to +80°C, up to 90% RH non-condensing
Number of touches	>10 million over lifetime
Surface Hardness	>6H
FPC* attachment method	ACF bonding
FPC pull-off strength	>50g/mm
FPC bending radius	1mm
Touch controller	FT6306
Interface to Host	I2C
Operating Voltage	3.3V
Power consumption	Idle mode: <0.5mW, Active mode <50mW

* FPC shape customized



REV	ECN NO.	NATURE OF MODIFICATION	CHANGED BY	DATE
Δ		First Release for prototype	Sunny Feng	2013.08.07

UNIT: mm	GENERAL TOLERANCE:		NEW VISION DISPLAY (SHENZHEN FACTORY) No. 10, Qianhai Avenue, Qianhai District, Shenzhen, China Tel: +86-755-26666666 Fax: +86-755-26666666
3RD ANGLE	X-X: ±0.3 Y-Y: ±0.10 ANGLE: ±0.5°		
NOT IN SCALE	NAME	PART NO.: ASNTP1133A01	TITLE: Assembly drawing for 2.4" TP1133
DRAFTED BY: Sunny Feng	DATE: 2013.08.07	DRAWING NO.: ATP1133A01-01	REV: 01
CHECKED BY:			SRI NO.:/1
APPROVED BY:			

THIS DRAWING IS PROPERTY OF NEW VISION DISPLAY LIMITED.
IT CANNOT BE REPRODUCED WITHOUT PERMISSION.