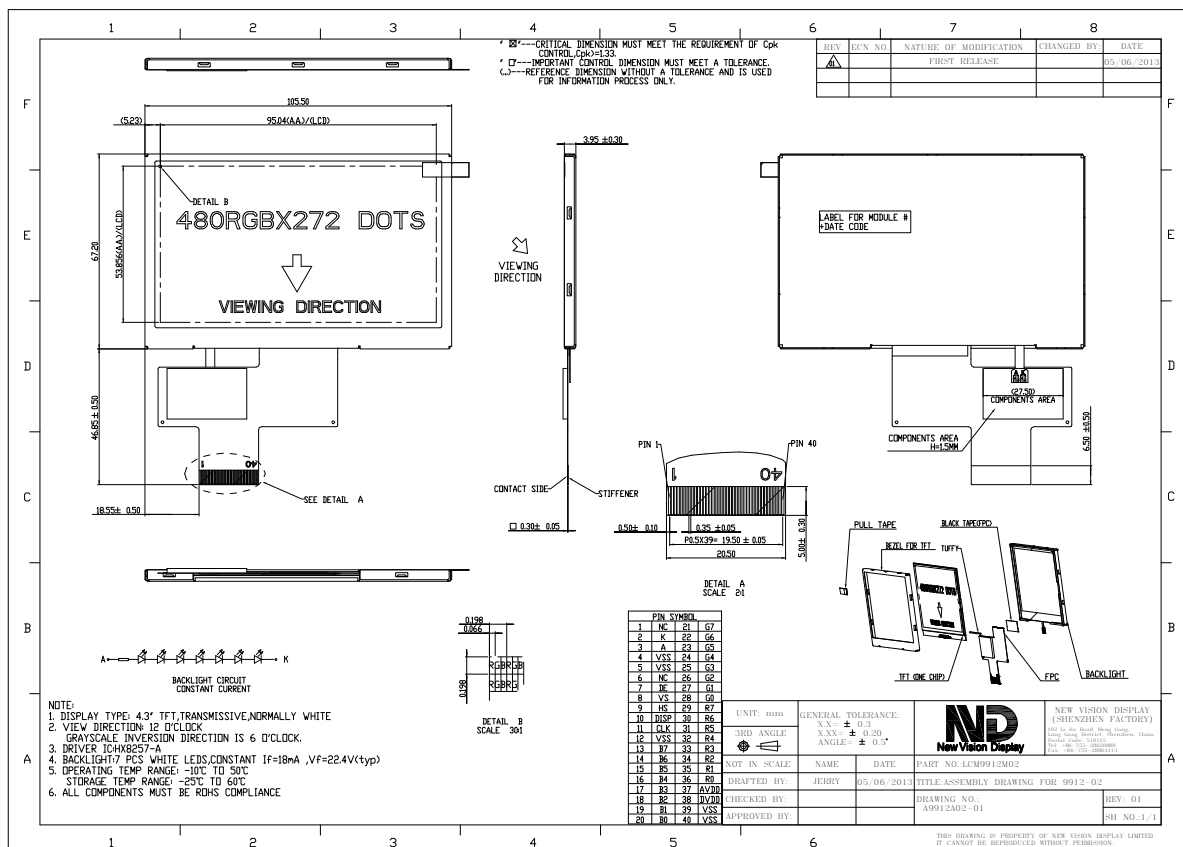


|                               |   |
|-------------------------------|---|
| Part Number                   | 9912DPTL043H-02   |
| Overall Dimensions            | 105.5 (H) x 67.2 (V) x 3.95(T)mm  |
| Active Area                   | 95.04 (H) x 53.86 (V) mm  |
| Resolution                    | 480 RGB (H) x 272 (V) Stripe  |
| Pixel Size                    | 0.198 x 0.198mm   |
| Display Colors                | 16.7M   |
| Display Mode                  | TN, Normally White, Transmissive  |
| LCD Type                      | a-Si TFT  |
| Contrast Ratio                | 350:1 (Typ)   |
| Viewing Angles (CR≥10)        | Typ 65°/65°/60°/65° (Left/Right/Top/Bottom)<br>Min 60°/60°/55°/60°(Left/Right/Top/Bottom) |
| View Direction                | 12 o'clock  |
| Grayscale inversion Direction | 6 O'clock   |
| Brightness (If=18mA)          | 200cd/m <sup>2</sup> (Min)  |
| NTSC                          | 45%   |
| Driver IC                     | HX8257-A  |
| VDD(Digital circuit)          | 3.0~3.6V  |
| VCI (pump circuit)            | 3.0~3.6V  |
| Power consumption             | 17.0mA (typ) @ VDD=3.3V, VCI=3.3V   |
| Interface                     | RGB 24 Bits   |
| Backlight System              | 7 White LEDs in Serial  |
| Forward Voltage               | 22.4V(typ)  |
| Forward Current               | 18 mA (typ)   |



The information contained herein is based upon typical data, New Vision Display makes no warranties expressed or implied as to its accuracy and assumes no liability arising out of its use by others. The user should determine suitability of New Vision Displays for each individual application.